



- ANNEALING
- BRAZING
- SOLDERING
- INSERT HEATING



- CATHETER TIPPING
- INSERT STAKING
- WELDING PREHEAT
- SHRINK FITTING

HEAT STATION 2500 R2C

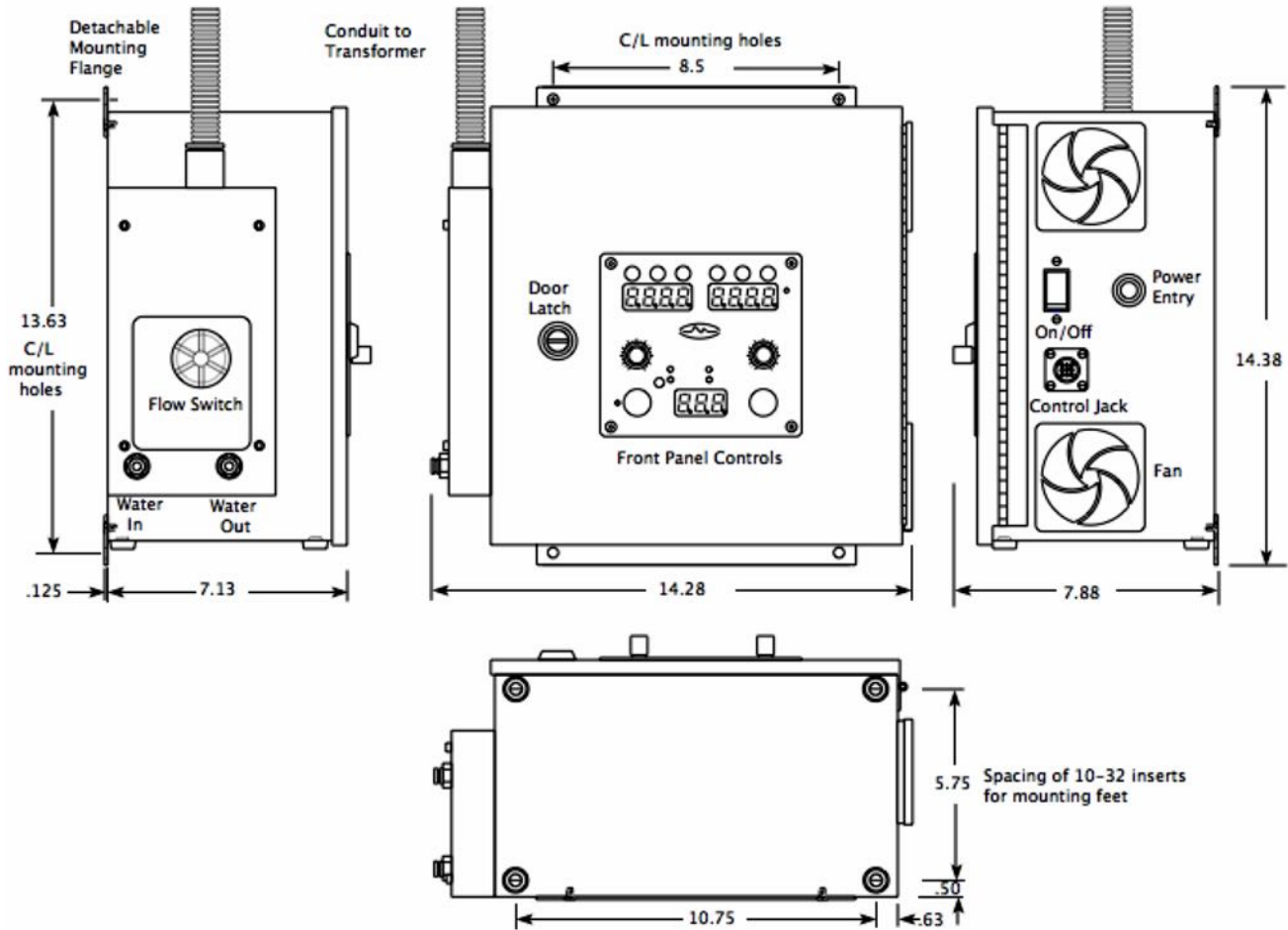
2.5 kW induction heating power supply with remote output transformer/coil on six foot flexible cable.

FEATURES

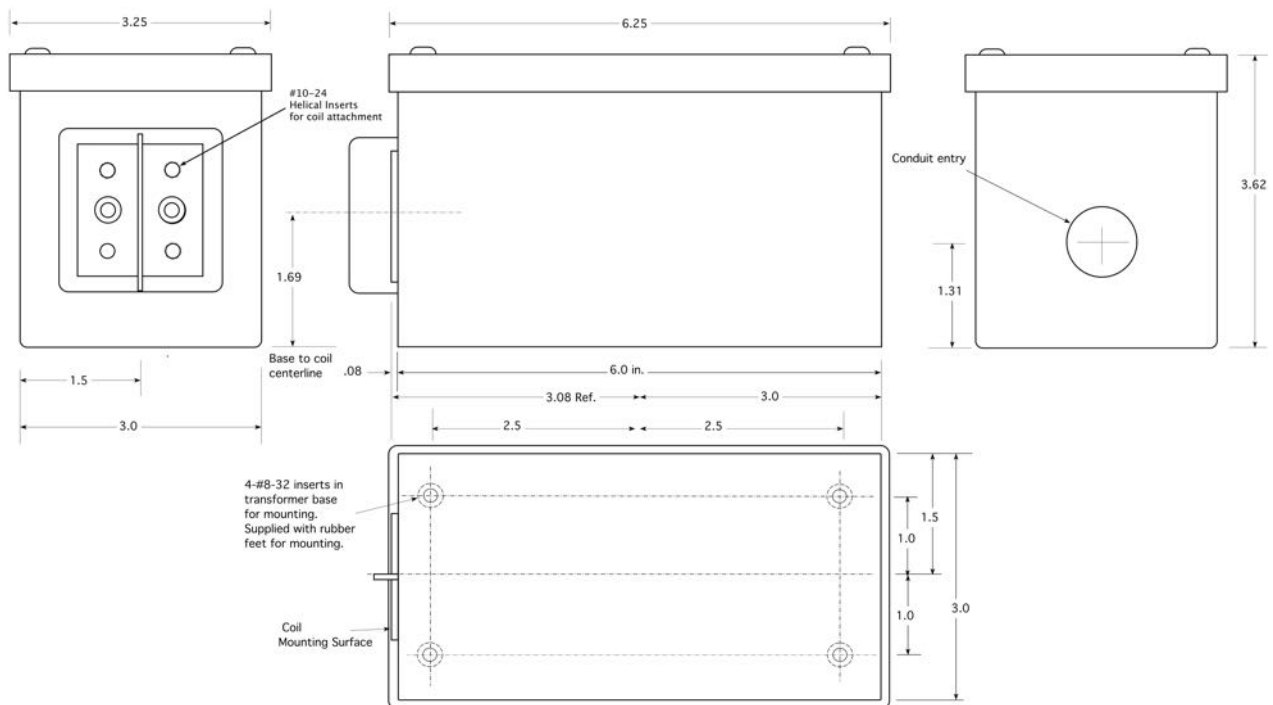
- 2500 watt water cooled medium frequency 20-40Khz induction power supply.
- Compact remote output transformer easily adapts to all types of processing fixtures.
- 7, 10 or 14 turn output transformers accept a variety of heating coil sizes and types.
- Standard 6' long flexible output cable.
- Dual timer/power control panel with on/off push buttons for fast setup and operation. Displays power in kW, countdown display for time remaining on timer one and timer two.
- Single or dual timer operation selector.
- Heat ON/OFF, low flow/over temperature, fuse fault, and poor load indicators.
- Bench top or wall mount with removable flanges.
- Local or remote on/off control.
- On/Off fast trip circuit breaker
- Integral coolant flow transducer to protect against overheating and visible flow indicator.
- Power tracking circuitry delivers constant power to load even with plant voltage fluctuation.
- Operates in resonance, no need to "ring up" to power.
- Electrically isolated output transformer
- Output power verification circuit provides power feedback signal to monitor heating cycle to cycle.
- Control input jack accepts manual ON/OFF controls, limit switches or PLC inputs to onboard timers.
- Repeatability to $\pm 0.5\%$
- One year warranty on parts and labor.

SPECIFICATIONS

- Weight: 28 lbs.
- Output Power: 2500 watts
- Incoming power: 208-240 V, 60 Hz, 1 phase, 13 amps
- 14.38 in High x 14.28 in Wide x 7.88 in. Deep
- Water Cooling Requirement of .5 gpm. with recommended pressure differential of 40 psi and 100 psi maximum pressure.
- Maximum inlet water temperature of 100 ° F.



Power supply can be used on a bench top with attached feet or can be wall or machine mounted. Swing open front door allows easy access to power supply components.



Output transformer is included with power supply. Transformers feature plated terminals with O ring seal water ports and helicoil inserts for mounting of water cooled heating coils.